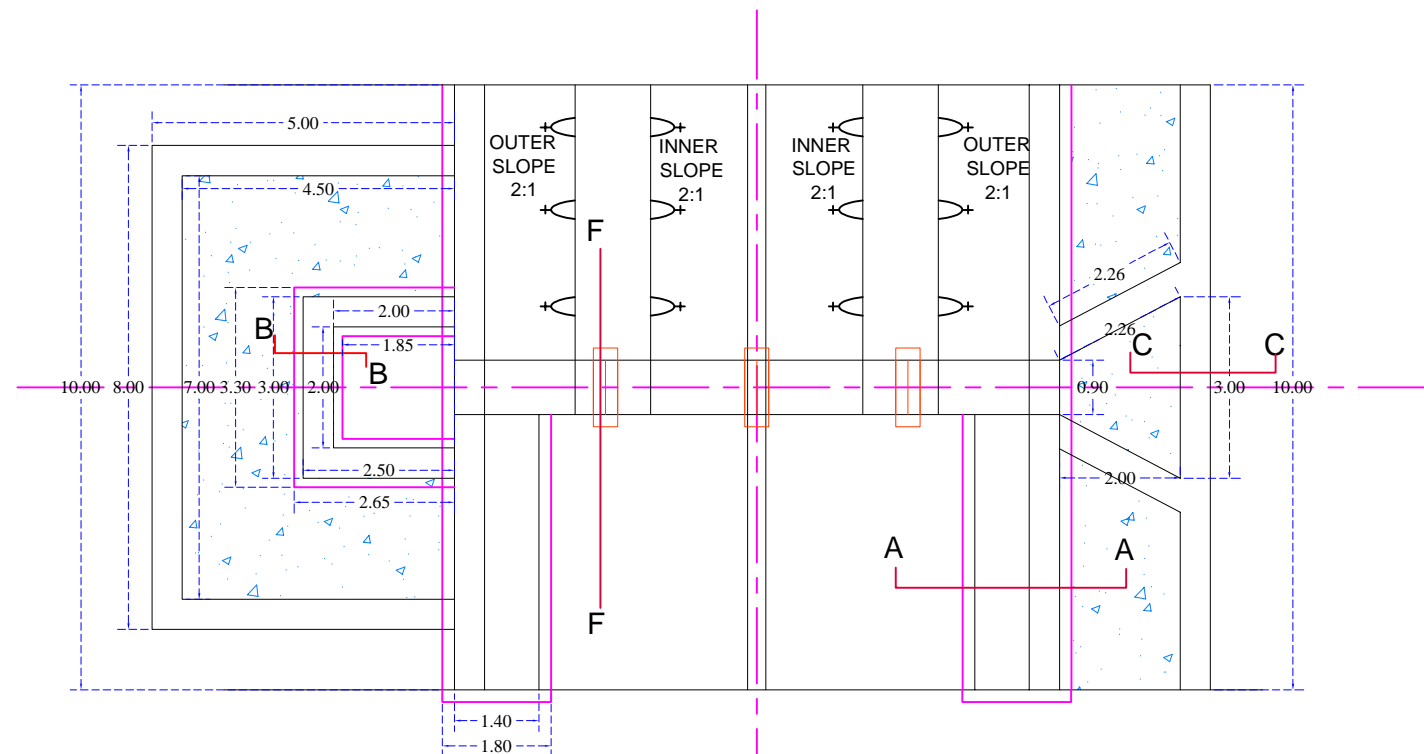
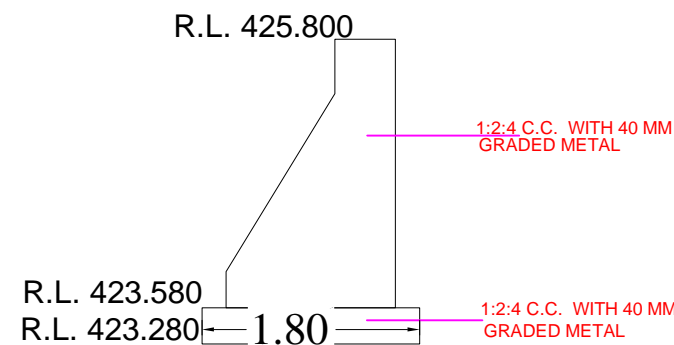


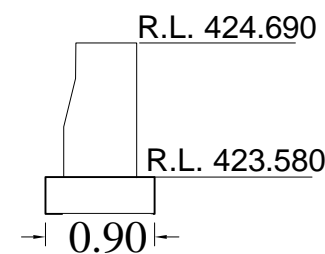
LONGITUDINAL SECTION



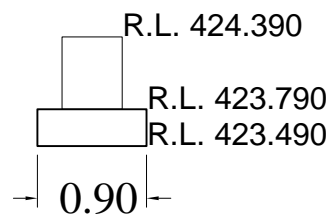
HALF TOP AND HALF BOTTOM PLAN



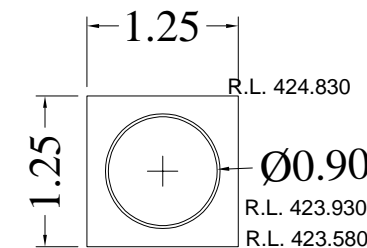
SECTION AT A-A



SECTION AT B-B



SECTION AT C-C



SECTION AT F-F

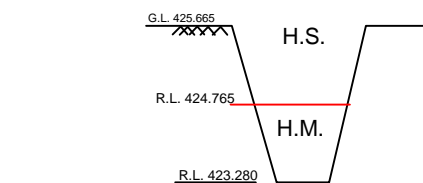
CANAL DATA :-

FULL SUPPLY DISCHARGE	-	0.14 CUMECs.
FULL SUPPLY DEPTH	-	0.30 METER
FREE BOARD	-	0.20 METER
SIDE SLOPES	-	2 : 1
TOP BANK WIDTH (L/S)	-	1.25 METER
(R/S)	-	1.25 METER
CANAL BED WIDTH	-	0.30 METER
VELOCITY	-	0.673 M/SEC.
BED GRADE	-	1 IN 500
GROUND LEVEL	-	425.665
CANAL BED LEVEL	-	425.580
FULL SUPPLY LEVEL	-	425.880
TOP BANK OF LEVEL	-	426.380
NATURE OF SOIL	-	H.S.+ H/M
VALUE OF "N"	-	0.018

NALA DATA :-

CATCHMENT AREA	-	4.60 Hact.
H.F.L.	-	424.990
N.B.L.	-	424.690
NO. OF PIPE	-	4 NOS.
SIZE OF PIPE	-	900 M DIA
NO. OF ROWS	-	1 ROWS
BED GRADE	-	1 : 240

DETAILS OF TRIAL PIT SECTION

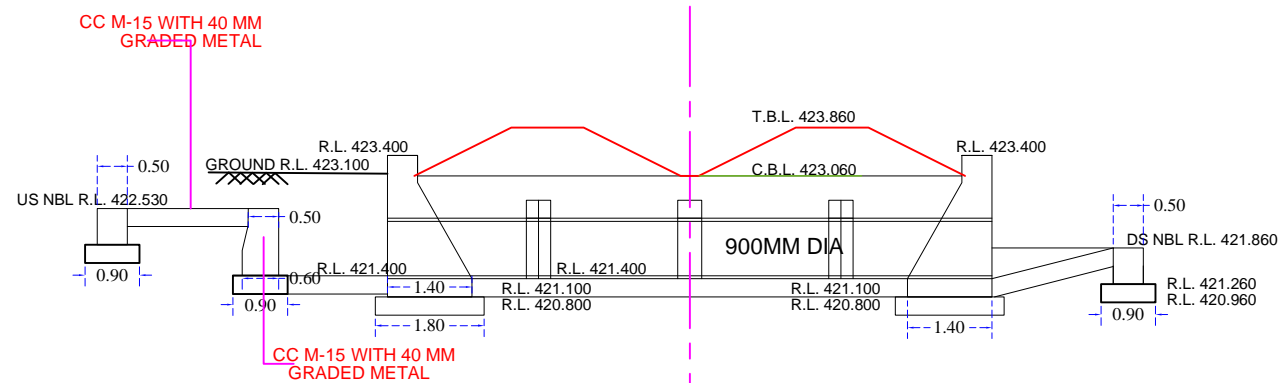


CERTIFICATE :-  
CERTIFIED THAT THE STRATA AND LEVELS SHOWN  
IN THIS TRIAL PIT SECTION IS CORRECT.

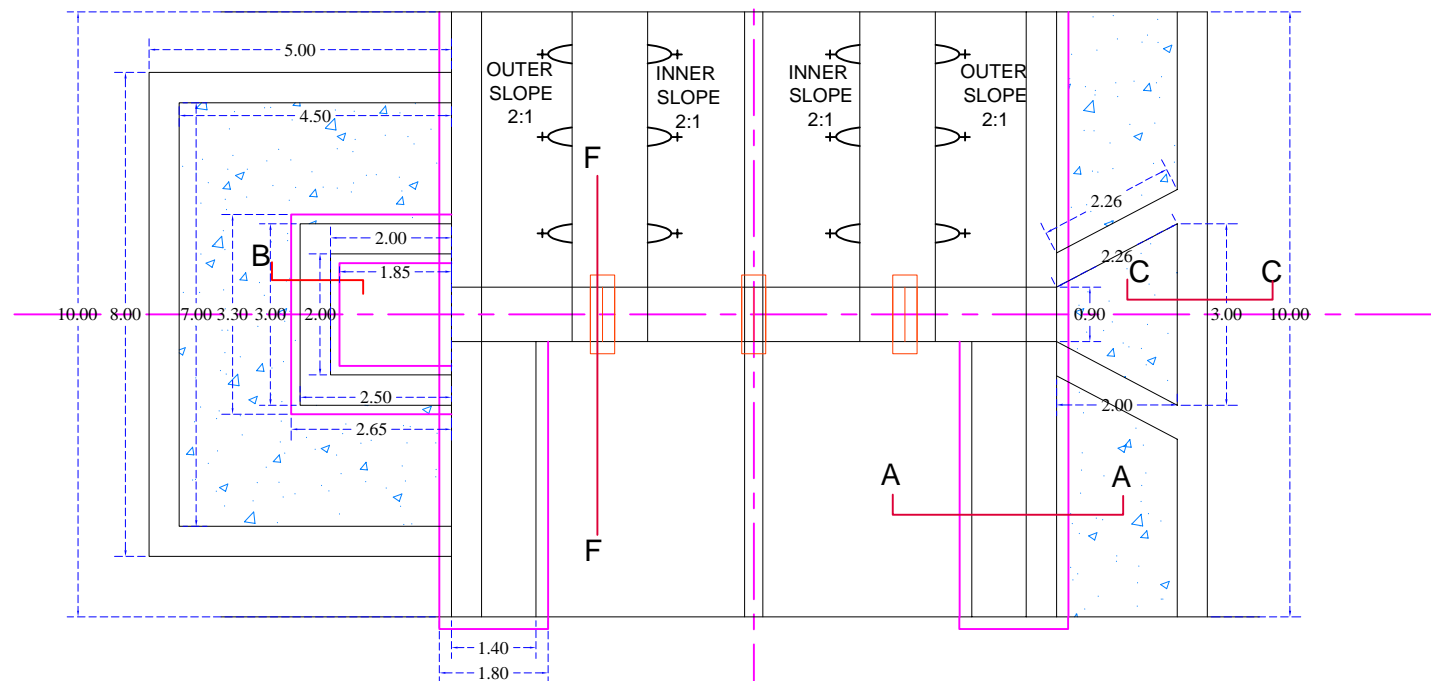
SUB ENGINEER  
SUB DIVISIONAL OFFICER  
WATER RESOURCES SUB DIVISION 1  
KANKER

GOVERNMENT OF CHHATTISGARH  
WATER RESOURCES DIVISION, GARIABAND  
RENOVATION OF SARWANDI TANK SCHEME  
DRAINAGE CROSSING AT R.D. 90.00 M OF MAIN CANAL

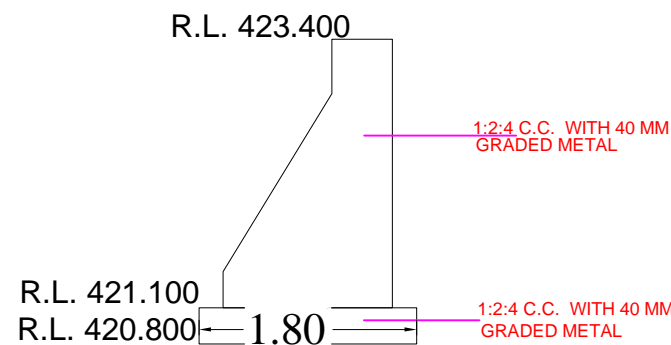
DRAWN BY:	CHECKED BY :-
SUB ENGINEER	ASSISTANT ENGINEER (D.) I.P. CIRCLE, JAGDALPUR DISTT. JAGDALPUR ( C.G.)
SUBMITTED BY :	CHECKED BY :
SUB DIVISIONAL OFFICER WATER RESOURCES SUB DIVISION 1 KANKER	EXECUTIVE ENGINEER (D.) I.P. CIRCLE, JAGDALPUR DISTT. JAGDALPUR (C.G.)
CHECKED BY :-	APPROVED BY :-
ASSISTANT ENGINEER(D) WATER RESOURCES DIVISION KANKER ( C.G.)	SUPERINTENDING ENGINEER I.P. CIRCLE, JAGDALPUR DISTT. JAGDALPUR ( C.G.)
RECOMMENDED BY:-	
EXECUTIVE ENGINEER WATER RESOURCES DIVISION, KANKER DISTT. KANKER ( C.G.)	
DRAWING NO.	



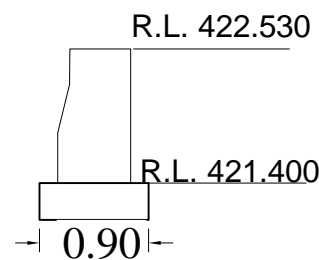
LONGITUDINAL SECTION



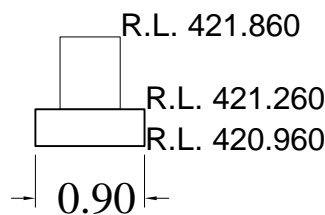
HALF TOP AND HALF BOTTOM PLAN



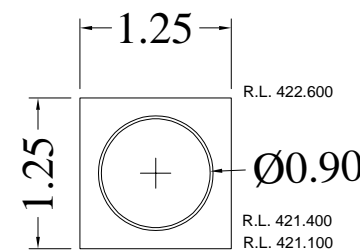
SECTION AT A-A



SECTION AT B-B



SECTION AT C-C



SECTION AT F-F

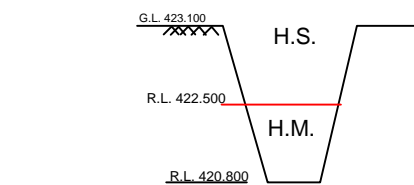
### CANAL DATA :-

FULL SUPPLY DISCHARGE	-	0.10 CUMECs.
FULL SUPPLY DEPTH	-	0.30 METER
FREE BOARD	-	0.20 METER
SIDE SLOPES	-	2 : 1
TOP BANK WIDTH (L/S)	-	1.25 METER
(R/S)	-	1.25 METER
CANAL BED WIDTH	-	0.30 METER
VELOCITY	-	0.673 M/SEC.
BED GRADE	-	1 IN 500
GROUND LEVEL	-	423.100
CANAL BED LEVEL	-	423.060
FULL SUPPLY LEVEL	-	423.360
TOP BANK OF LEVEL	-	423.860
NATURE OF SOIL	-	H.S.+ H/M
VALUE OF "N"	-	0.018

### NALA DATA :-

CATCHMENT AREA	-	6.46 Hact.
H.F.L.	-	422.830
N.B.L.	-	422.530
NO. OF PIPE	-	4 NOS.
SIZE OF PIPE	-	900 M DIA
NO. OF ROWS	-	1 ROWS
BED GRADE	-	1 : 240

### DETAILS OF TRIAL PIT SECTION

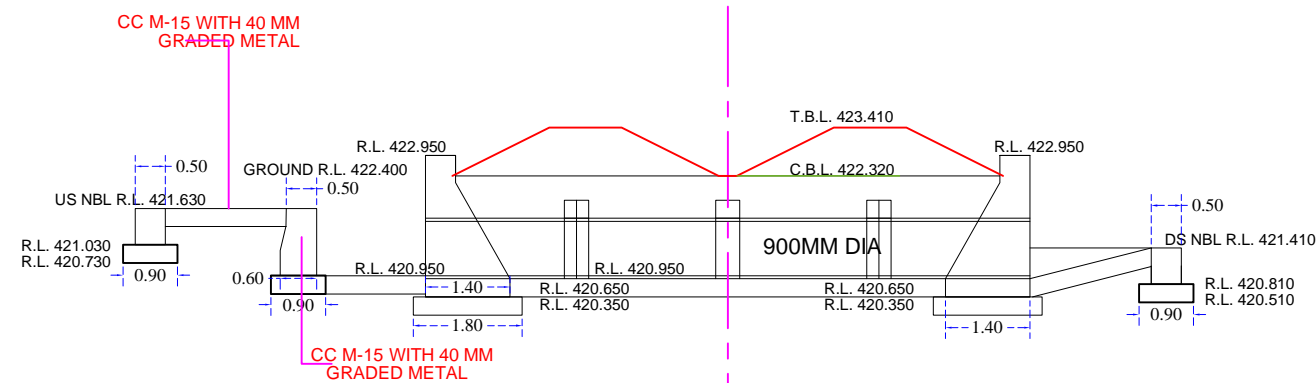


CERTIFICATE :-  
CERTIFIED THAT THE STRATA AND LEVELS SHOWN  
IN THIS TRIAL PIT SECTION IS CORRECT.

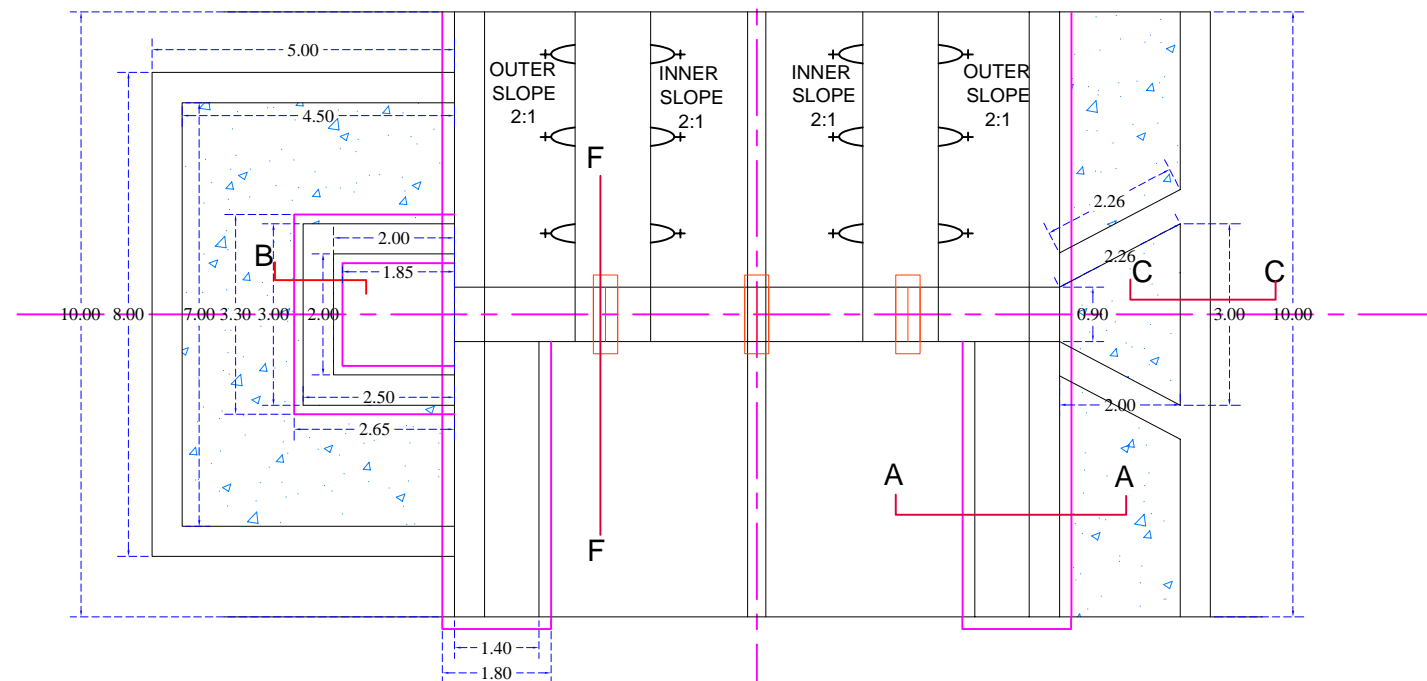
SUB ENGINEER  
SUB DIVISIONAL OFFICER  
WATER RESOURCES SUB DIVISION 1  
KANKER

### GOVERNMENT OF CHHATTISGARH WATER RESOURCES DIVISION, GARIABAND RENOVATION OF SARWANDI TANK SCHEME DRAINAGE CROSSING AT R.D. 810.00 M OF MAIN CANAL

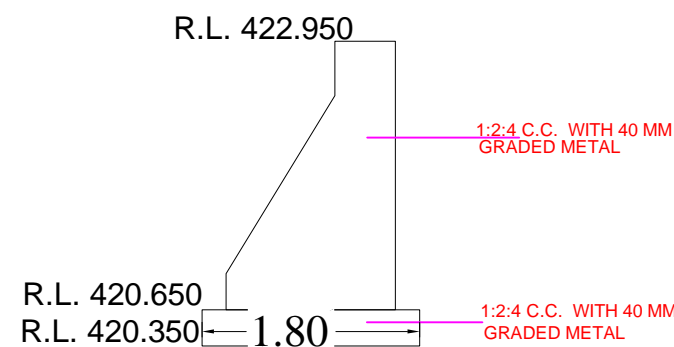
DRAWN BY:	CHECKED BY :-
SUB ENGINEER	ASSISTANT ENGINEER (D.) I.P. CIRCLE, JAGDALPUR DISTT. JAGDALPUR ( C.G.)
SUBMITTED BY :	CHECKED BY :
SUB DIVISIONAL OFFICER WATER RESOURCES SUB DIVISION 1 KANKER	EXECUTIVE ENGINEER (D.) I.P. CIRCLE, JAGDALPUR DISTT. JAGDALPUR (C.G.)
CHECKED BY :-	APPROVED BY :-
ASSISTANT ENGINEER(D) WATER RESOURCES DIVISION KANKER ( C.G.)	SUPERINTENDING ENGINEER I.P. CIRCLE, JAGDALPUR DISTT. JAGDALPUR ( C.G.)
RECOMMENDED BY:-	
EXECUTIVE ENGINEER WATER RESOURCES DIVISION, KANKER DISTT. KANKER ( C.G.)	
DRAWING NO.	



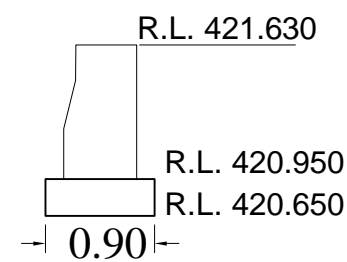
LONGITUDINAL SECTION



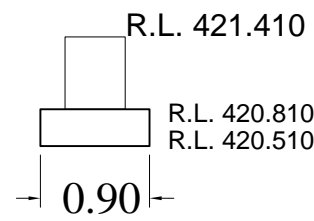
HALF TOP AND HALF BOTTOM PLAN



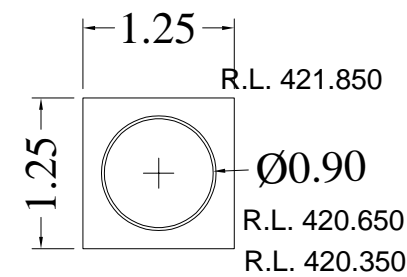
SECTION AT A-A



SECTION AT B-B



SECTION AT C-C



SECTION AT F-F

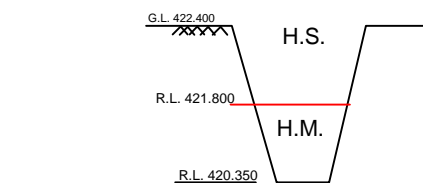
### CANAL DATA :-

FULL SUPPLY DISCHARGE	-	0.10 CUMECs.
FULL SUPPLY DEPTH	-	0.30 METER
FREE BOARD	-	0.20 METER
SIDE SLOPES	-	2 : 1
TOP BANK WIDTH (L/S)	-	1.25 METER
(R/S)	-	1.25 METER
CANAL BED WIDTH	-	0.30 METER
VELOCITY	-	0.673 M/SEC.
BED GRADE	-	1 IN 500
GROUND LEVEL	-	422.400
CANAL BED LEVEL	-	422.320
FULL SUPPLY LEVEL	-	422.660
TOP BANK OF LEVEL	-	423.410
NATURE OF SOIL	-	H.S.+ H/M
VALUE OF "N"	-	0.018

### NALA DATA :-

CATCHMENT AREA	-	6.46 Hact.
H.F.L.	-	422.830
N.B.L.	-	422.530
NO. OF PIPE	-	4 NOS.
SIZE OF PIPE	-	900 M DIA
NO. OF ROWS	-	1 ROWS
BED GRADE	-	1 : 240

### DETAILS OF TRIAL PIT SECTION

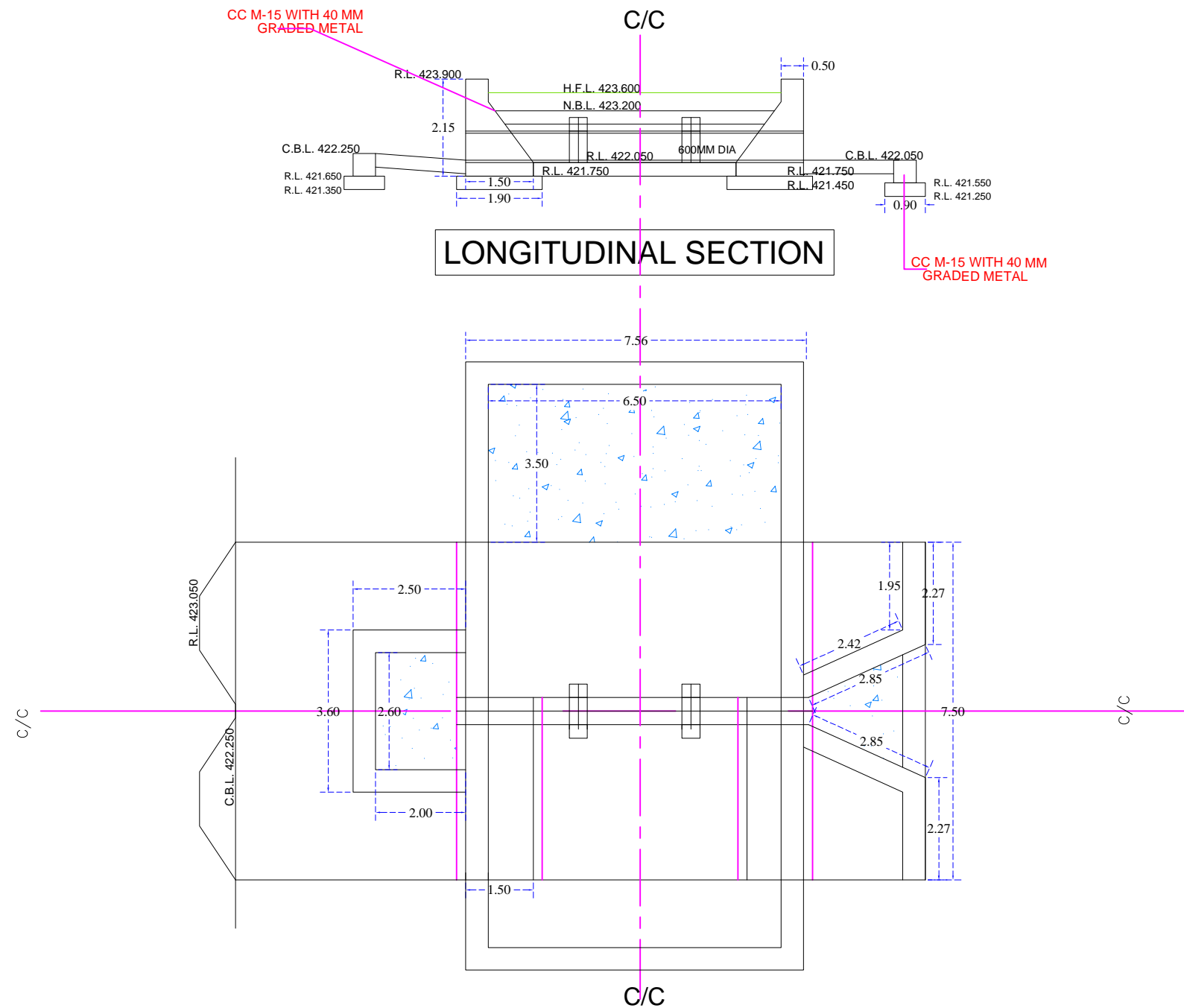


CERTIFICATE :-  
CERTIFIED THAT THE STRATA AND LEVELS SHOWN  
IN THIS TRIAL PIT SECTION IS CORRECT.

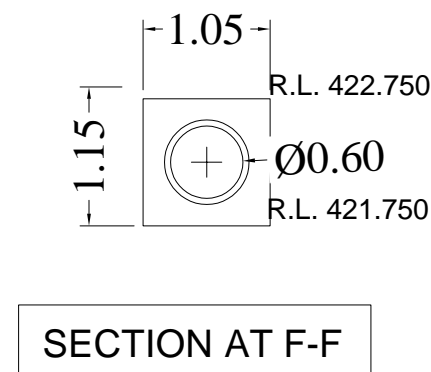
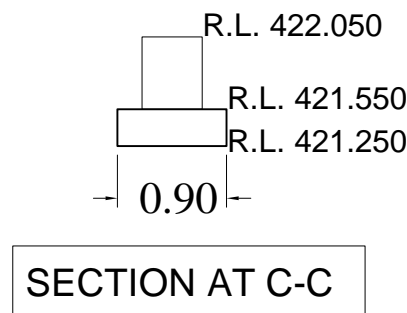
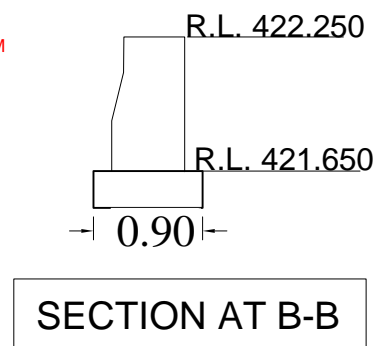
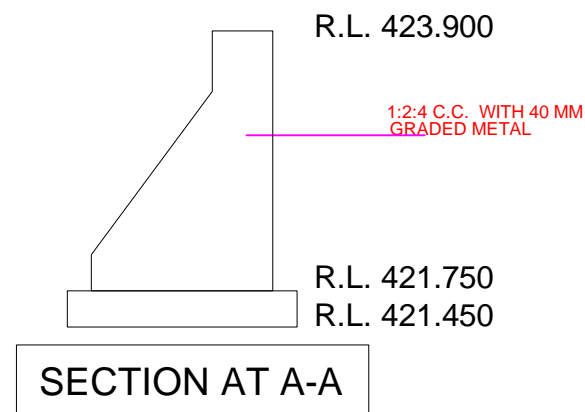
SUB ENGINEER  
SUB DIVISIONAL OFFICER  
WATER RESOURCES SUB DIVISION 1  
KANKER

## GOVERNMENT OF CHHATTISGARH WATER RESOURCES DIVISION, GARIABAND RENOVATION OF SARWANDI TANK SCHEME DRAINAGE CROSSING AT R.D. 1260.00 M OF MAIN CANAL

DRAWN BY:	CHECKED BY :-
SUB ENGINEER	ASSISTANT ENGINEER (D.) I.P. CIRCLE, JAGDALPUR DISTT. JAGDALPUR ( C.G.)
SUBMITTED BY :	CHECKED BY :
SUB DIVISIONAL OFFICER WATER RESOURCES SUB DIVISION 1 KANKER	EXECUTIVE ENGINEER (D.) I.P. CIRCLE, JAGDALPUR DISTT. JAGDALPUR (C.G.)
CHECKED BY :-	APPROVED BY :-
ASSISTANT ENGINEER(D) WATER RESOURCES DIVISION KANKER ( C.G.)	SUPERINTENDING ENGINEER I.P. CIRCLE, JAGDALPUR DISTT. JAGDALPUR ( C.G.)
RECOMMENDED BY:-	
EXECUTIVE ENGINEER WATER RESOURCES DIVISION, KANKER DISTT. KANKER ( C.G.)	
DRAWING NO.	



HALF TOP AND HALF BOTTOM PLAN



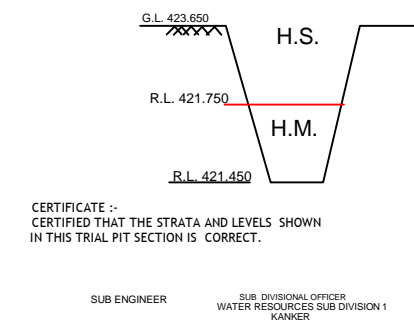
CANAL DATA :-

FULL SUPPLY DISCHARGE	-	0.06CUMECs.
FULL SUPPLY DEPTH	-	0.30 METER
FREE BOARD	-	0..20 METER
SIDE SLOPES	-	1.5 : 1
TOP BANK WIDTH (L/S)	-	1.25 METER
(R/S)	-	1.25 METER
CANAL BED WIDTH	-	0.30 METER
VELOCITY	-	1.16 M/SEC.
BED GRADE	-	1 IN 500
GROUND LEVEL	-	423.650
CANAL BED LEVEL	-	422.250
FULL SUPPLY LEVEL	-	422.550
TOP BANK OF LEVEL	-	423.050
NATURE OF SOIL	-	H.S.+ H/M
VALUE OF "N"	-	0.018

NALA DATA :-

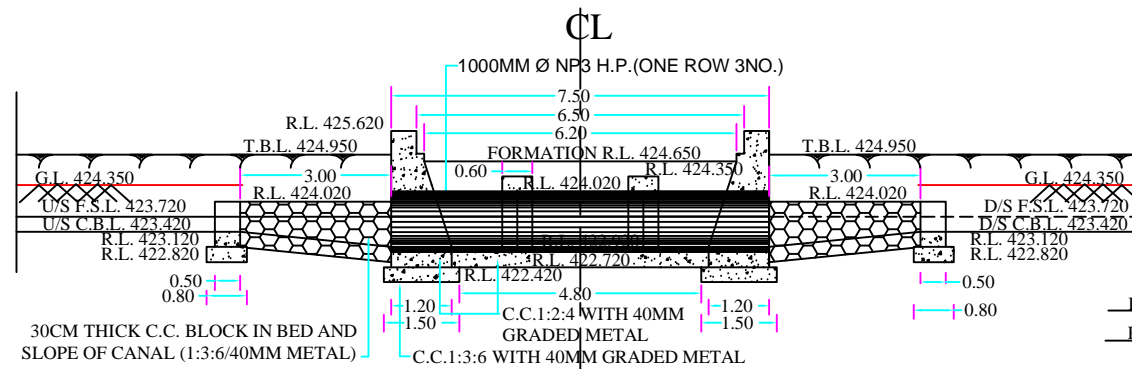
CATCHMENT AREA	-	12.60 Hact.
H.F.L.	-	423.600
N.B.L.	-	423.200
NO. OF PIPE	-	3 NOS.
SIZE OF PIPE	-	600 mm Ø
NO.OF ROWS	-	1 ROWS
BED GRADE	-	1 : 240

DETAILS OF TRIAL PIT SECTION



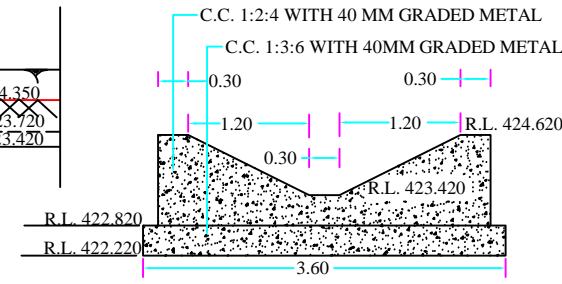
GOVERNMENT OF CHHATTISGARH  
WATER RESOURCES DIVISION,GARIABAND  
RENOVATION OF SARWANDI TANK SCHEME  
SUPER PASSAGE AT R.D. 1620.00 M OF MAIN CANAL

DRAWN BY:	CHECKED BY :-
SUB ENGINEER	ASSISTANT ENGINEER (D.) I.P. CIRCLE, JAGDALPUR DISTT. JAGDALPUR ( C.G.)
SUBMITTED BY :	CHECKED BY :
SUB DIVISIONAL OFFICER WATER RESOURCES SUB DIVISION 1 KANKER	EXECUTIVE ENGINEER (D.) I.P. CIRCLE,JAGDALPUR DISTT. JAGDALPUR (C.G.)
CHECKED BY :-	APPROVED BY :-
ASSISTANT ENGINEER(D) WATER RESOURCES DIVISION KANKER ( C.G.)	SUPERINTENDING ENGINEER I.P. CIRCLE, JAGDALPUR DISTT. JAGDALPUR ( C.G.)
RECOMMENDED BY:-	
EXECUTIVE ENGINEER WATER RESOURCES DIVISION, KANKER DISTT. KANKER ( C.G.)	
DRAWING NO.	



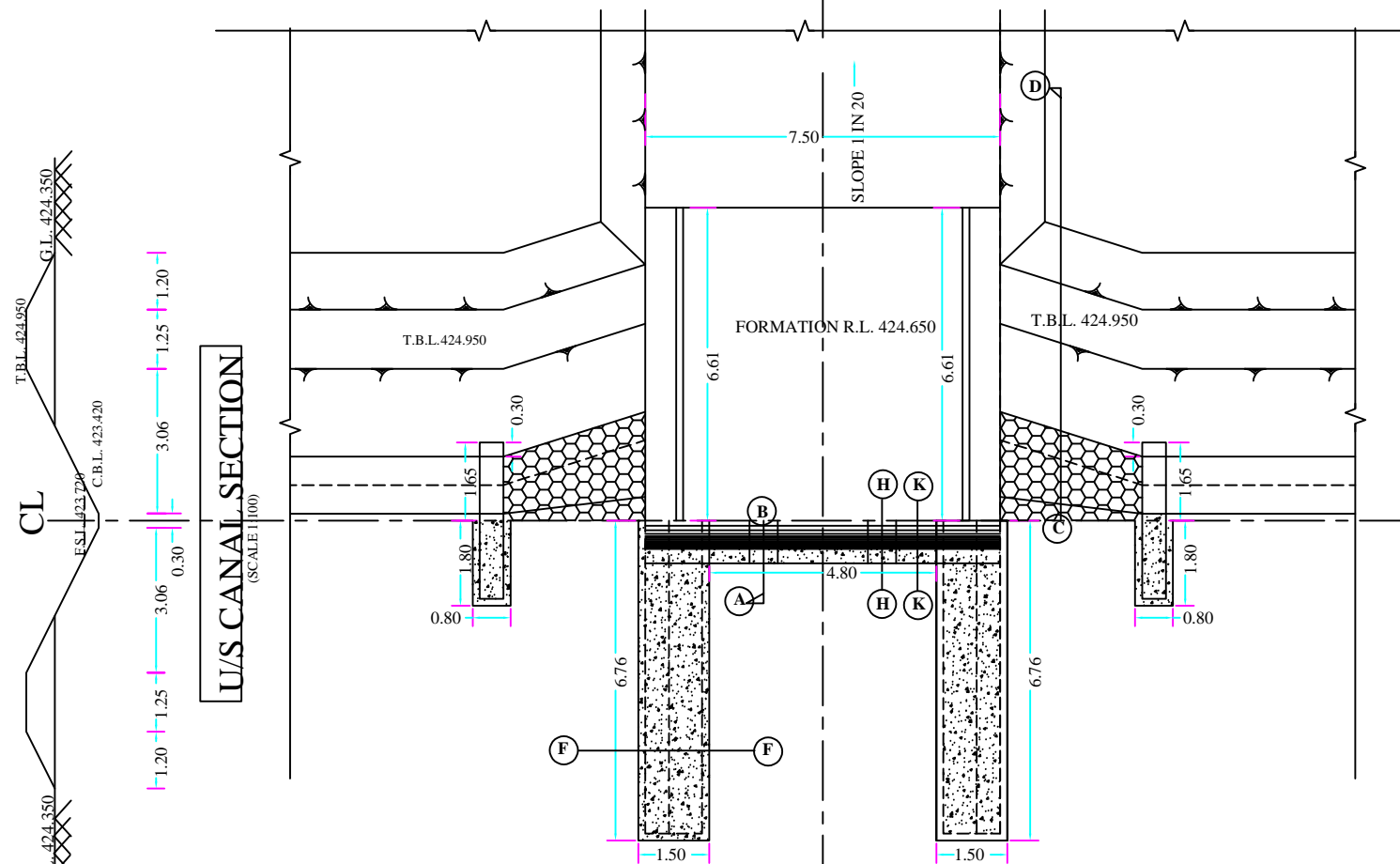
LONGITUDINAL CROSS SECTION

(SCALE 1:100)



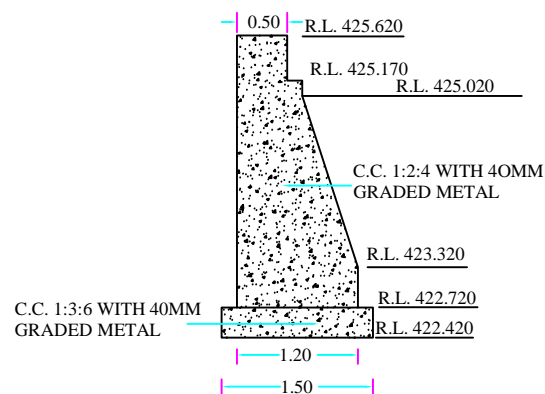
SECTION OF U/S TOE WALL

(SCALE 1:50)



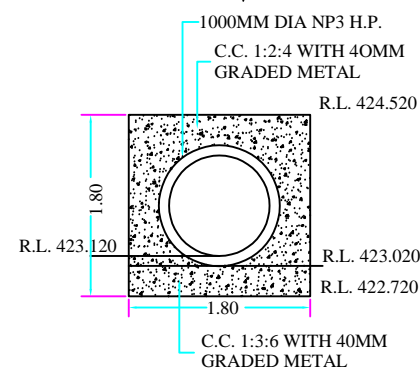
HALF TOP HALF BOTTOM PLAN

(SCALE 1:100)



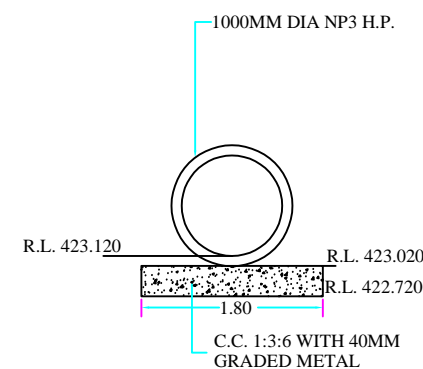
SECTION AT F-F

(SCALE 1:50)



SECTION AT H-H

(SCALE 1:50)

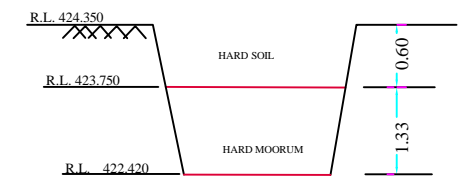


SECTION AT K-K

(SCALE 1:50)

CANAL DATA			
S.N.	DATA	PARTICULARS	
		D/S	U/S
1	DISCHARGE	0.14 CUMEC/S	0.14 CUMEC/S
2	CANAL BED WIDTH	0.30 M	0.30 M
3	CANAL BED LEVEL	423.420 M	423.420 M
4	FULL SUPPLY DEPTH	0.30 M	0.30 M
5	FULL SUPPLY LEVEL	423.720 M	423.720 M
6	TOP BANK LEVEL	424.950 M	424.950 M
7	GROUND LEVEL	424.350 M	424.350 M
8	SIDE SLOPE CUTTING	2:1	2:1
9	BED GRADE	1 IN 500	1 IN 500
10	TOP WIDTH OF BANK	L&R=1.25/1.25M	L&R=1.25/1.25M
11	FREE BOARD	0.30	0.30
12	VELOCITY	0.746 m/sec	0.746 m/sec
13	DROP	00.00	
14	COEFFICIENT OF RUGOSITY 'N'	0.018	
15	TYPE OF SOIL	HARD SOIL	
16	TYPE OF CANAL	LINED	

DETAILS OF TRIAL PIT SECTION



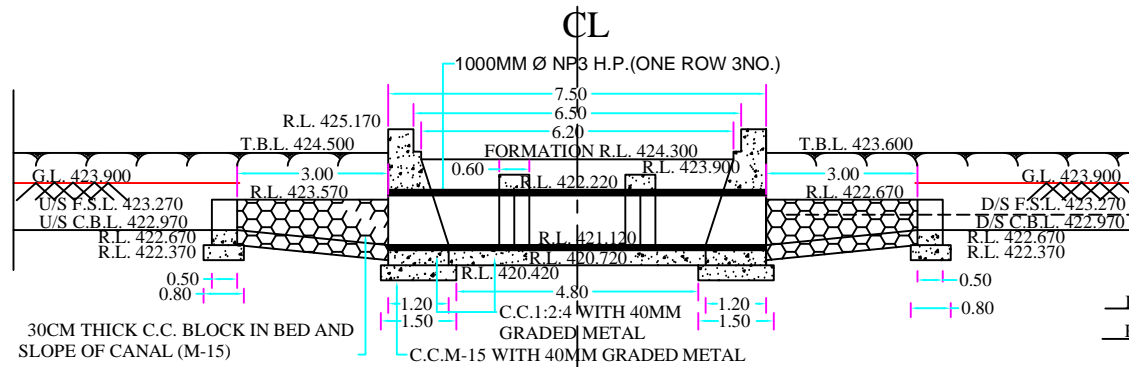
CERTIFICATE :-  
CERTIFIED THAT THE STRATA AND LEVELS SHOWN  
IN THIS TRIAL PIT SECTION IS CORRECT.

SUB ENGINEER  
WATER RESOURCES SUB DIVISION 1  
KANKER  
EXECUTIVE ENGINEER  
DISTT. KANKER ( C.G.)

GOVERNMENT OF CHHATTISGARH  
WATER RESOURCES DIVISION, KANKER  
RENOVATION OF SARWANDI TANK & CANAL LINING WORK  
VRB AT RD 450 OF MAIN CANAL

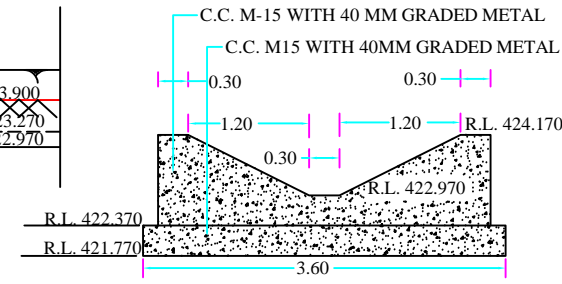
DRAWN BY:	CHECKED BY :-
SUB ENGINEER	ASSISTANT ENGINEER (D.) I.P. CIRCLE, JAGDALPUR DISTT. JAGDALPUR ( C.G.)
SUBMITTED BY :	CHECKED BY :-
SUB DIVISIONAL OFFICER WATER RESOURCES SUB DIVISION KANKER	EXECUTIVE ENGINEER (D.) I.P. CIRCLE, JAGDALPUR DISTT. JAGDALPUR ( C.G.)
CHECKED BY :-	APPROVED BY :-
ASSISTANT ENGINEER(D) WATER RESOURCES DIVISION KANKER ( C.G.)	SUPERINTENDING ENGINEER I.P. CIRCLE, JAGDALPUR DISTT. JAGDALPUR ( C.G.)
RECOMMENDED BY:-	
EXECUTIVE ENGINEER WATER RESOURCES DIVISION, KANKER DISTT. KANKER ( C.G.)	
DRAWING NO.	SMG WATER AND POWER SOLUTIONS PVT. LTD.





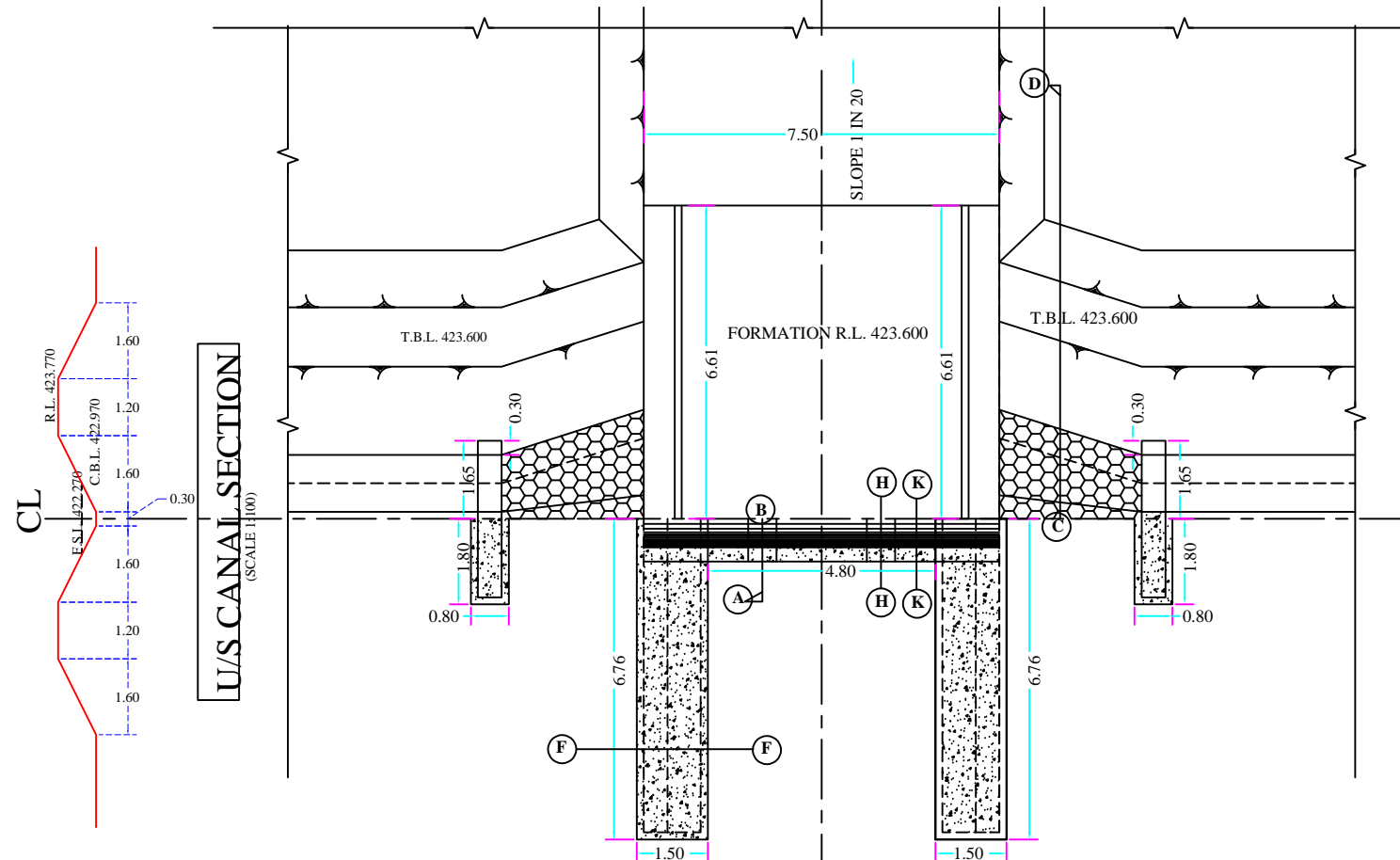
LONGITUDINAL CROSS SECTION

(SCALE 1:100)



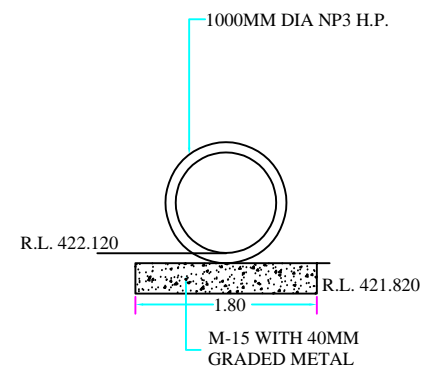
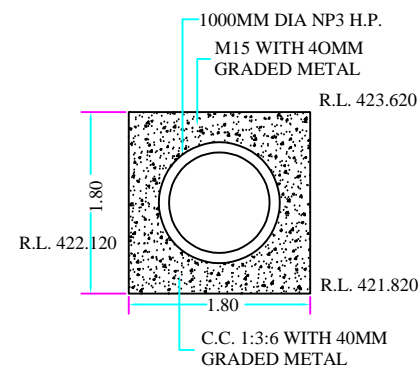
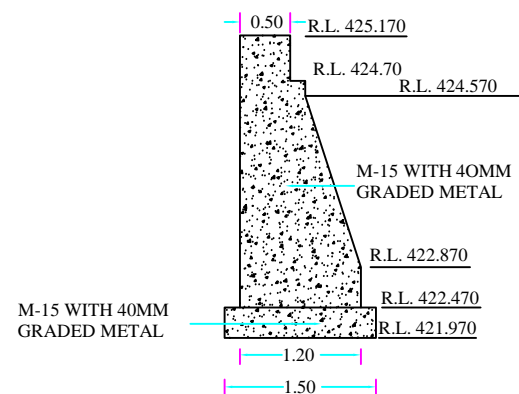
SECTION OF U/S TOE WALL

(SCALE 1:50)



HALF TOP HALF BOTTOM PLAN

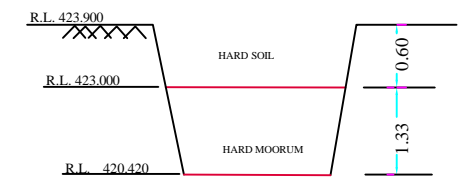
(SCALE 1:100)



CANAL DATA

S.N.	DATA	PARTICULARS	
		D/S	U/S
1	DISCHARGE	0.10 CUMECs	0.10 CUMECs
2	CANAL BED WIDTH	0.30 M	0.30 M
3	CANAL BED LEVEL	422.970 M	422.970 M
4	FULL SUPPLY DEPTH	0.30 M	0.30 M
5	FULL SUPPLY LEVEL	423.270 M	423.270 M
6	TOP BANK LEVEL	423.770 M	423.770 M
7	GROUND LEVEL	423.900 M	423.900 M
8	SIDE SLOPE CUTTING	2:1	2:1
9	BED GRADE	1 IN 500	1 IN 500
10	TOP WIDTH OF BANK	L&R=1.25/1.25M	L&R=1.25/1.25M
11	FREE BOARD	0.30	0.30
12	VELOCITY	0.746 M/Sec	0.746 M/Sec
13	DROP	00.00	
14	COEFFICIENT OF RUGOSITY 'N'	0.018	
15	TYPE OF SOIL	HARD SOIL	
16	TYPE OF CANAL	LINED	

DETAILS OF TRIAL PIT SECTION

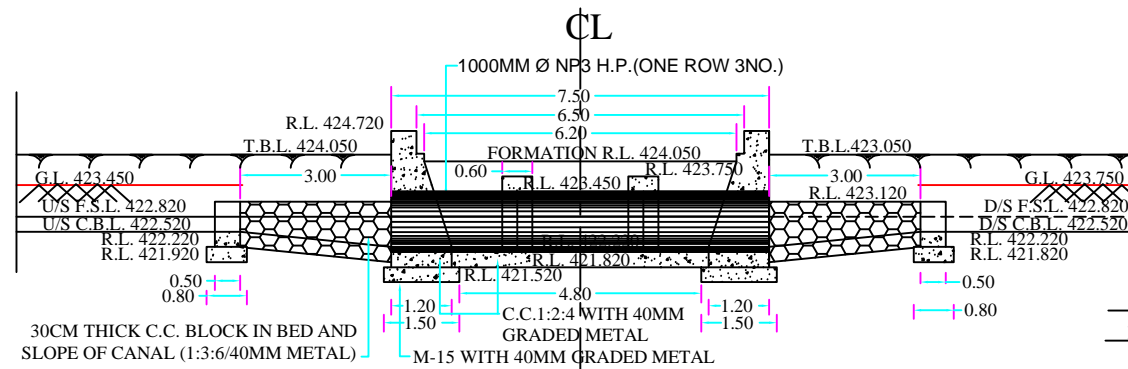


CERTIFICATE :-  
CERTIFIED THAT THE STRATA AND LEVELS SHOWN  
IN THIS TRIAL PIT SECTION IS CORRECT.

SUB ENGINEER  
WATER RESOURCES SUB DIVISION 1  
KANKER

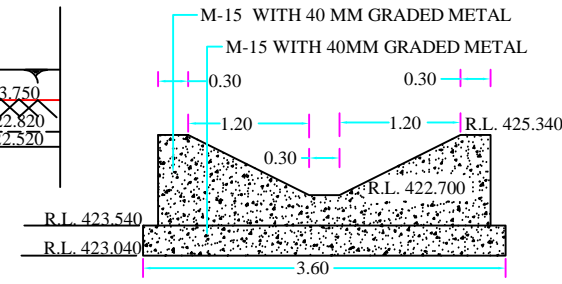
GOVERNMENT OF CHHATTISGARH  
WATER RESOURCES DIVISION,KANKER  
RENOVATION OF SARWADI TANK & CANAL LINING WORK  
VRB AT RD 900 OF MAIN CANAL

DRAWN BY:	CHECKED BY :-
SUB ENGINEER	ASSISTANT ENGINEER (D.) I.P. CIRCLE, JAGDALPUR DISTT. JAGDALPUR ( C.G.)
SUBMITTED BY :	CHECKED BY :
SUB DIVISIONAL OFFICER WATER RESOURCES SUB DIVISION KANKER	EXECUTIVE ENGINEER (D.) I.P. CIRCLE, JAGDALPUR DISTT. JAGDALPUR ( C.G.)
CHECKED BY :-	APPROVED BY :-
ASSISTANT ENGINEER(D) WATER RESOURCES DIVISION KANKER ( C.G.)	SUPERINTENDING ENGINEER I.P. CIRCLE, JAGDALPUR DISTT. JAGDALPUR ( C.G.)
RECOMMENDED BY:-	
EXECUTIVE ENGINEER WATER RESOURCES DIVISION, KANKER DISTT.KANKER ( C.G.)	
DRAWING NO.	SMG WATER AND POWER SOLUTIONS PVT. LTD.



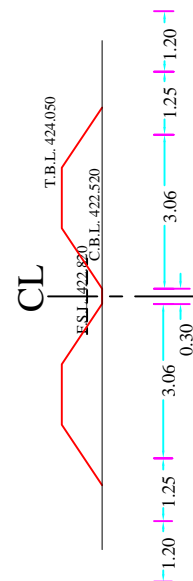
LONGITUDINAL CROSS SECTION

(SCALE 1:100)



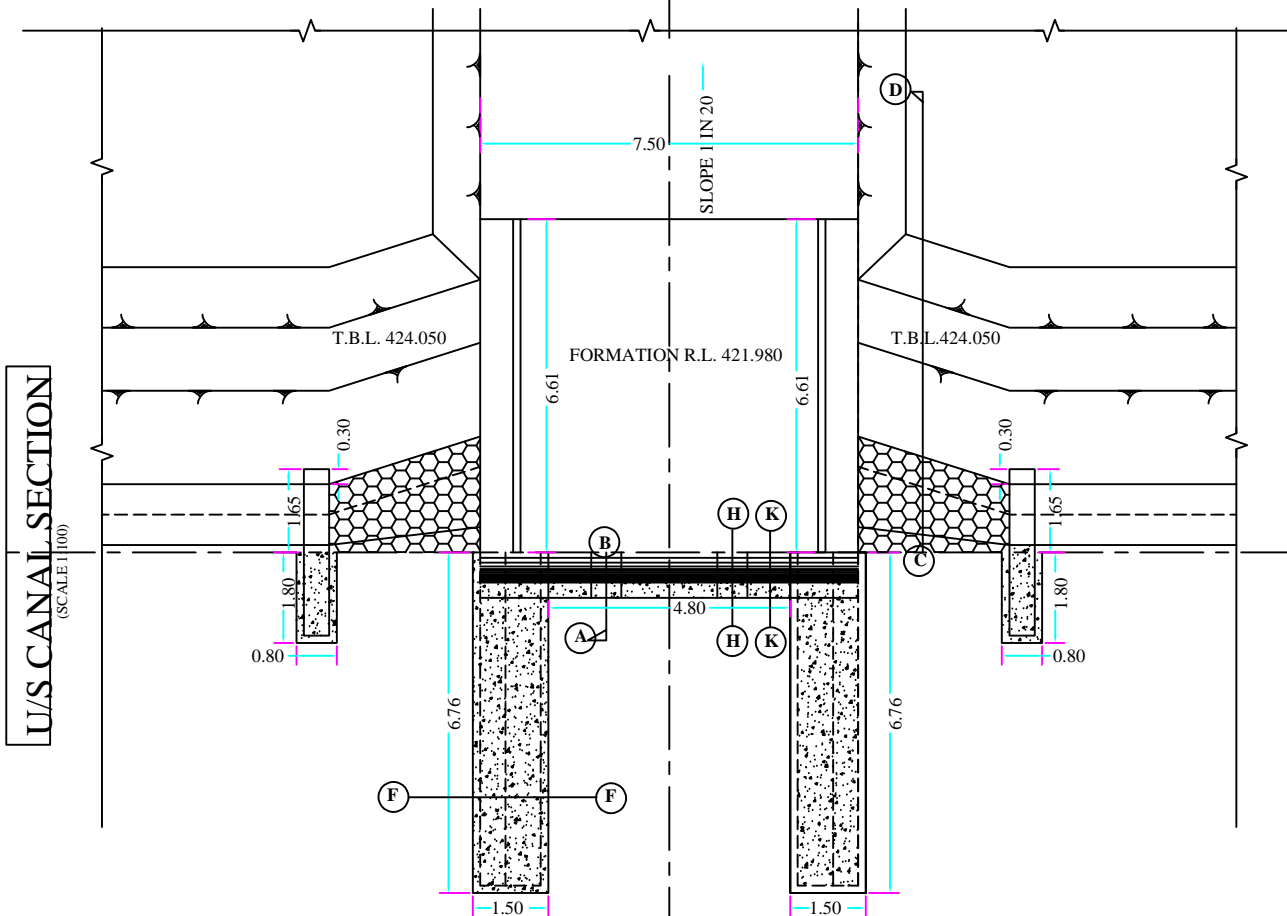
SECTION OF U/S TOE WALL

(SCALE 1:50)



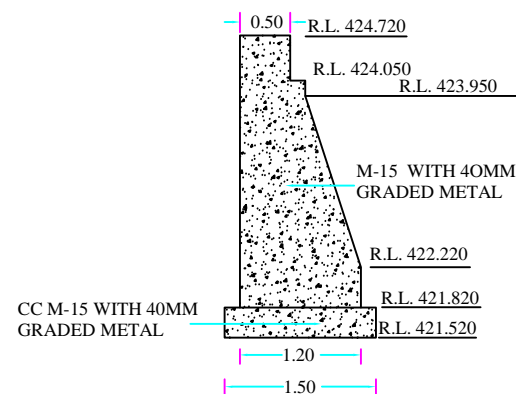
U/S CANAL SECTION

(SCALE 1:100)



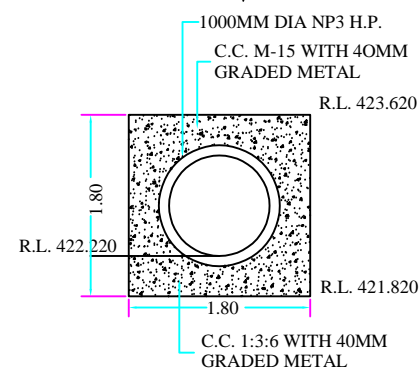
HALF TOP HALF BOTTOM PLAN

(SCALE 1:100)



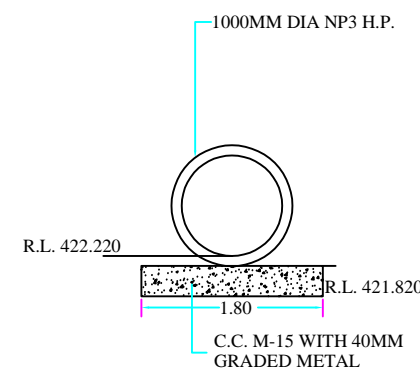
SECTION AT F F

(SCALE 1:50)



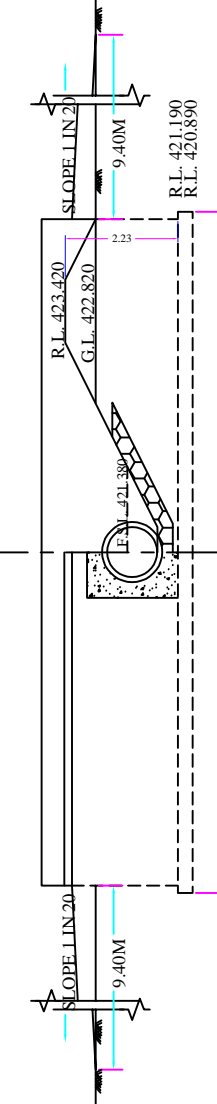
SECTION AT H H

(SCALE 1:50)



SECTION AT K K

(SCALE 1:50)



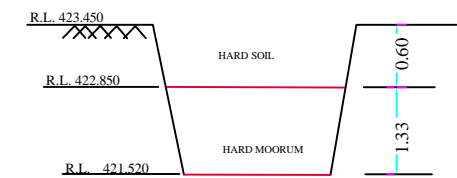
SECTION AT A B C D

(SCALE 1:100)

CANAL DATA

S.N.	DATA	PARTICULARS	
		D/S	U/S
1	DISCHARGE	0.06 CUMEC/S	0.06 CUMEC/S
2	CANAL BED WIDTH	0.30 M	0.30 M
3	CANAL BED LEVEL	422.520 M	422.520 M
4	FULL SUPPLY DEPTH	0.30 M	0.30 M
5	FULL SUPPLY LEVEL	422.820 M	422.820 M
6	TOP BANK LEVEL	422.820 M	422.820 M
7	GROUND LEVEL	424.050 M	424.050 M
8	SIDE SLOPE CUTTING	1.5:1	1.5:1
9	BED GRADE	1 IN 1000	1 IN 1000
10	TOP WIDTH OF BANK	L&R=1.25/1.25M	L&R=1.25/1.25M
11	FREE BOARD	0.30	0.30
12	VELOCITY	0.746 M/Sec	0.746 M/Sec
13	DROP	00.00	
14	COEFFICIENT OF RUGOSITY 'N'	0.018	
15	TYPE OF SOIL	HARD SOIL	
16	TYPE OF CANAL	LINED	

DETAILS OF TRIAL PIT SECTION



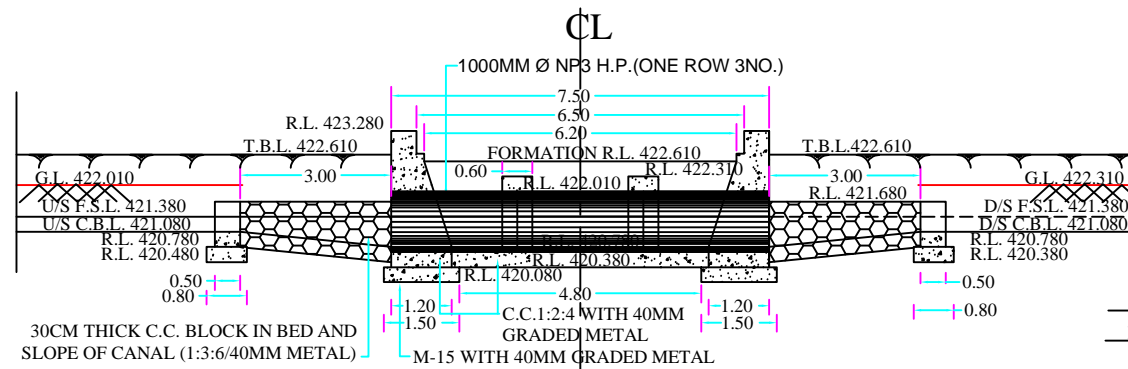
CERTIFICATE :-  
CERTIFIED THAT THE STRATA AND LEVELS SHOWN  
IN THIS TRIAL PIT SECTION IS CORRECT.

SUB ENGINEER

WATER RESOURCES SUB DIVISION 1  
KANKER

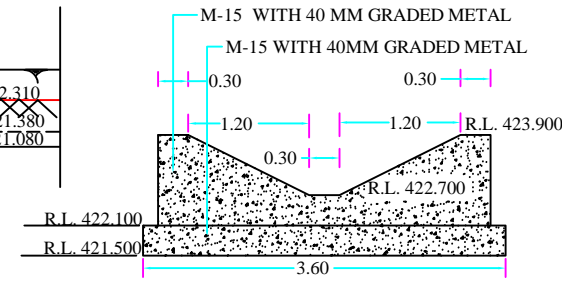
GOVERNMENT OF CHHATTISGARH  
WATER RESOURCES DIVISION, KANKER  
RENOVATION OF SARWANDI TANK & CANAL LINING WORK  
VRB AT RD 1350 OF MAIN CANAL

DRAWN BY:	CHECKED BY :-
SUB ENGINEER	ASSISTANT ENGINEER (D.) I.P. CIRCLE, JAGDALPUR DISTT. JAGDALPUR ( C.G.)
SUBMITTED BY :	CHECKED BY :-
SUB DIVISIONAL OFFICER WATER RESOURCES SUB DIVISION KANKER	EXECUTIVE ENGINEER (D.) I.P. CIRCLE, JAGDALPUR DISTT. JAGDALPUR ( C.G.)
CHECKED BY :-	APPROVED BY :-
ASSISTANT ENGINEER(D) WATER RESOURCES DIVISION KANKER ( C.G.)	SUPERINTENDING ENGINEER I.P. CIRCLE, JAGDALPUR DISTT. JAGDALPUR ( C.G.)
RECOMMENDED BY:-	
EXECUTIVE ENGINEER WATER RESOURCES DIVISION, KANKER DISTT. KANKER ( C.G.)	
DRAWING NO.	SMG WATER AND POWER SOLUTIONS PVT. LTD.



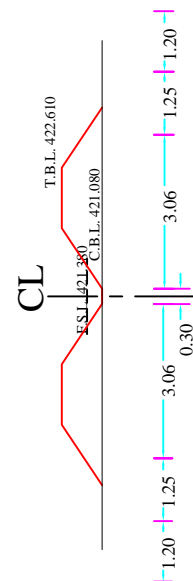
LONGITUDINAL CROSS SECTION

(SCALE 1:100)



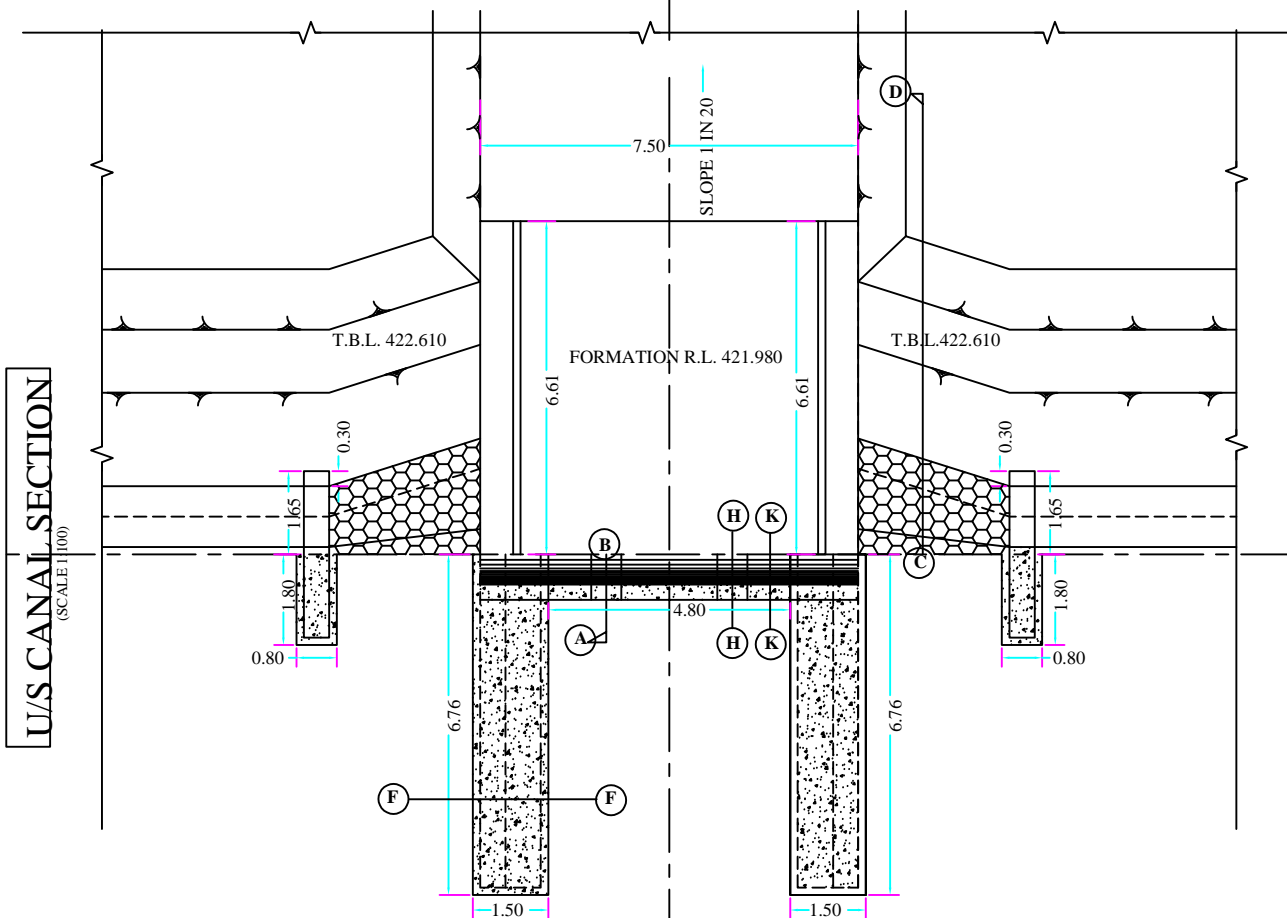
SECTION OF U/S TOE WALL

(SCALE 1:50)



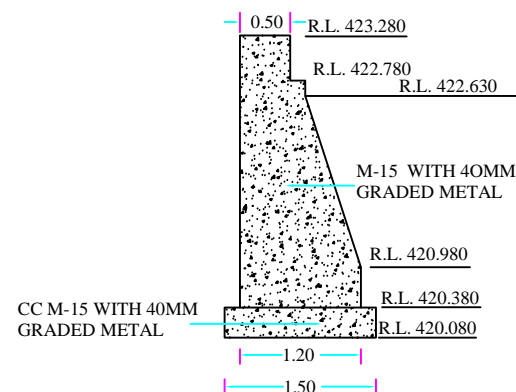
U/S CANAL SECTION

(SCALE 1:100)



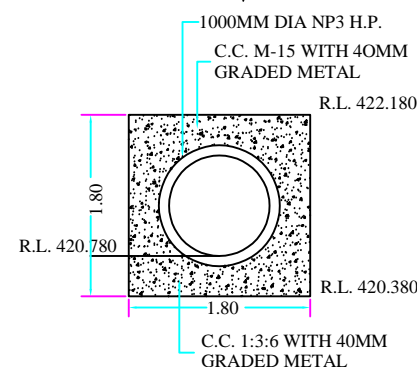
HALF TOP HALF BOTTOM PLAN

(SCALE 1:100)



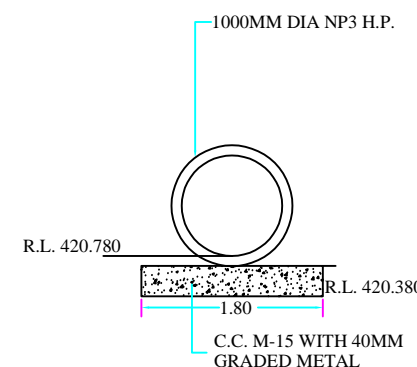
SECTION AT F F

(SCALE 1:50)



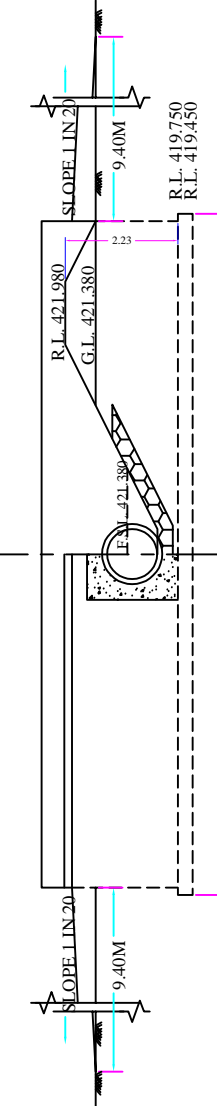
SECTION AT H H

(SCALE 1:50)



SECTION AT K K

(SCALE 1:50)



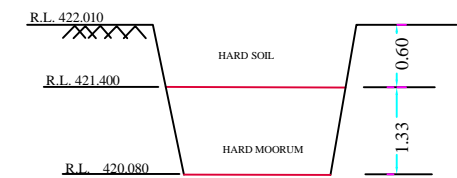
SECTION AT A B C D

(SCALE 1:100)

## CANAL DATA

S.N.	DATA	PARTICULARS	
		D/S	U/S
1	DISCHARGE	0.06 CUMEC/S	0.06 CUMEC/S
2	CANAL BED WIDTH	0.30 M	0.30 M
3	CANAL BED LEVEL	421.080 M	421.080 M
4	FULL SUPPLY DEPTH	0.30 M	0.30 M
5	FULL SUPPLY LEVEL	421.380 M	421.380M
6	TOP BANK LEVEL	421.980M	421.980M
7	GROUND LEVEL	422.610M	422.610 M
8	SIDE SLOPE CUTTING	1.5:1	1.5:1
9	BED GRADE	1 IN 1000	1 IN 1000
10	TOP WIDTH OF BANK	L&R=1.25/1.25M	L&R=1.25/1.25M
11	FREE BOARD	0.30	0.30
12	VELOCITY	0.746 M/Sec	0.746 M/Sec
13	DROP	00.00	
14	COEFFICIENT OF RUGOSITY 'N'	0.018	
15	TYPE OF SOIL	HARD SOIL	
16	TYPE OF CANAL	LINED	

## DETAILS OF TRIAL PIT SECTION



CERTIFICATE :-  
CERTIFIED THAT THE STRATA AND LEVELS SHOWN  
IN THIS TRIAL PIT SECTION IS CORRECT.

SUB ENGINEER

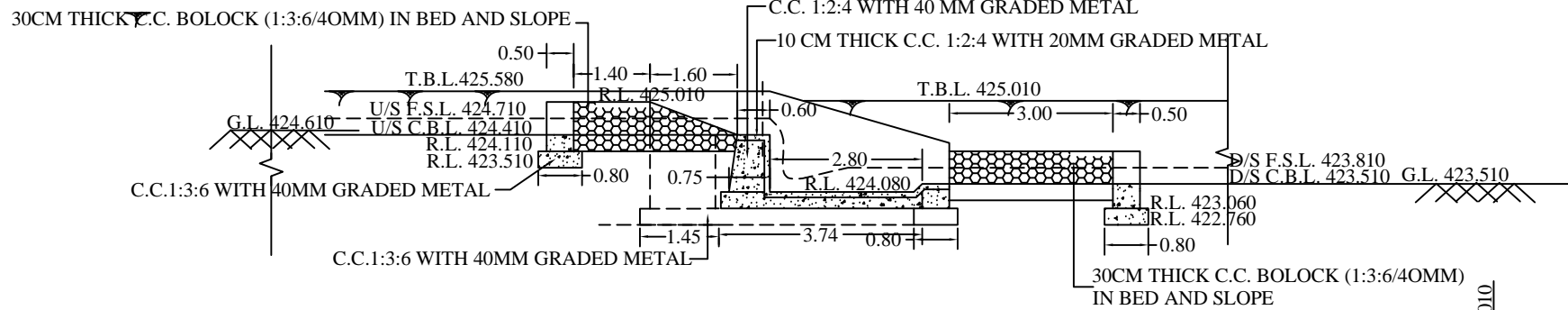
WATER RESOURCES SUB DIVISION 1  
KANKER

## GOVERNMENT OF CHHATTISGARH WATER RESOURCES DIVISION, KANKER RENOVATION OF SARWANDI TANK & CANAL LINING WORK VRB AT RD 1890 OF MAIN CANAL

DRAWN BY:	CHECKED BY :-
SUB ENGINEER	ASSISTANT ENGINEER (D.) I.P. CIRCLE, JAGDALPUR DISTT. JAGDALPUR ( C.G.)
SUBMITTED BY :	CHECKED BY :-
SUB DIVISIONAL OFFICER WATER RESOURCES SUB DIVISION KANKER	EXECUTIVE ENGINEER (D.) I.P. CIRCLE, JAGDALPUR DISTT. JAGDALPUR ( C.G.)
CHECKED BY :-	APPROVED BY :-
ASSISTANT ENGINEER(D) WATER RESOURCES DIVISION KANKER ( C.G.)	SUPERINTENDING ENGINEER I.P. CIRCLE, JAGDALPUR DISTT. JAGDALPUR ( C.G.)
RECOMMENDED BY:-	
EXECUTIVE ENGINEER WATER RESOURCES DIVISION, KANKER DISTT. KANKER ( C.G.)	
DRAWING NO.	SMG WATER AND POWER SOLUTIONS PVT. LTD.

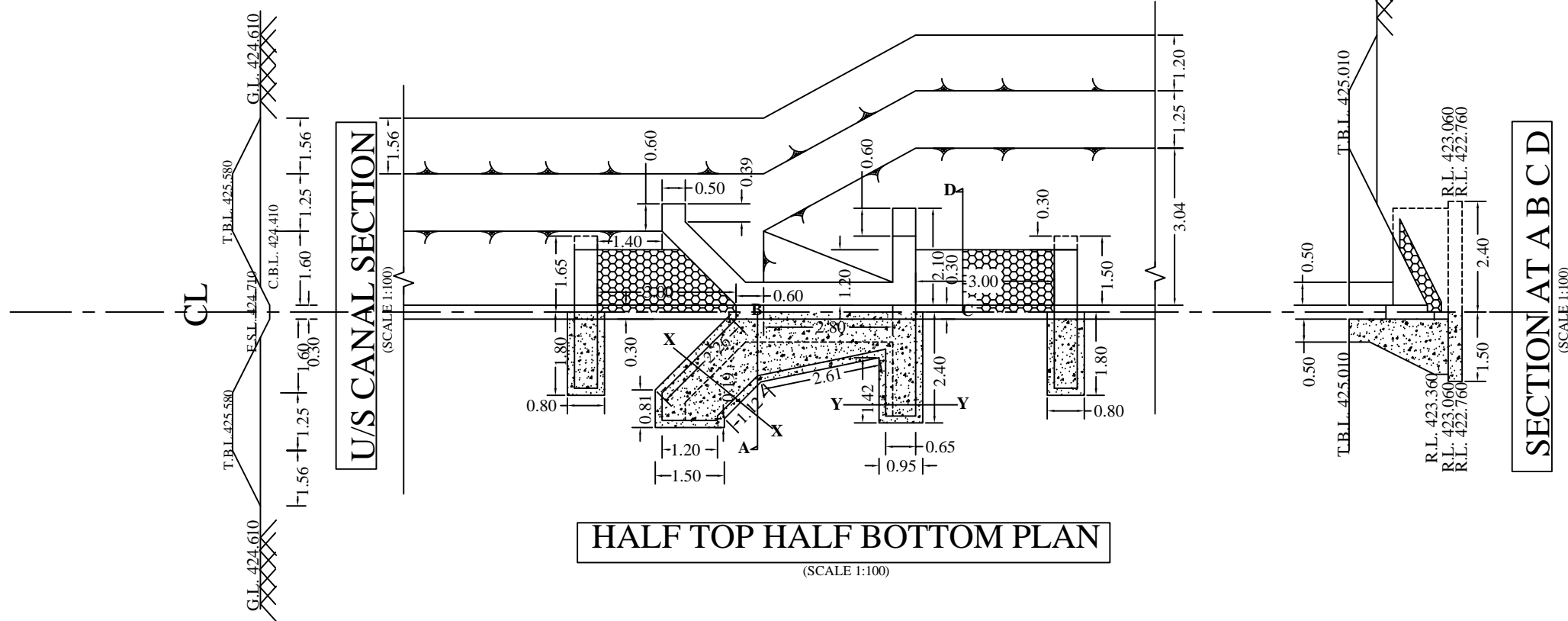






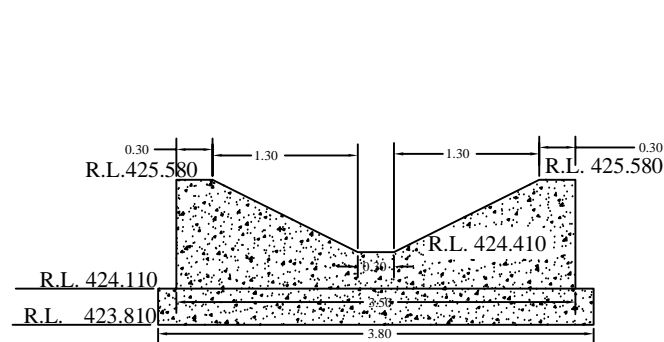
### LONGITUDINAL CROSS SECTION

(SCALE 1:100)



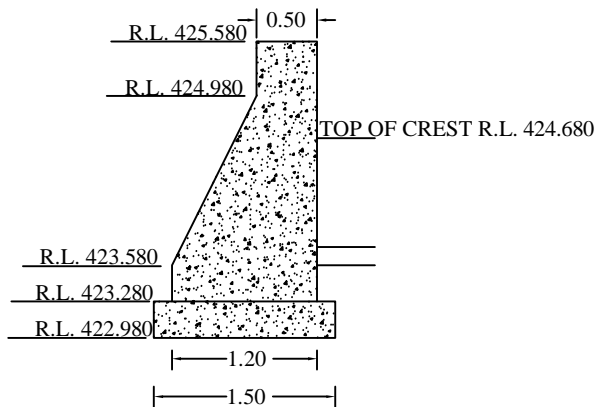
### HALF TOP HALF BOTTOM PLAN

(SCALE 1:100)

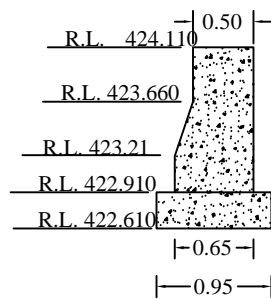


### SECTION OF U/S TOE WALL

(SCALE 1:50)



### SECTION AT X X



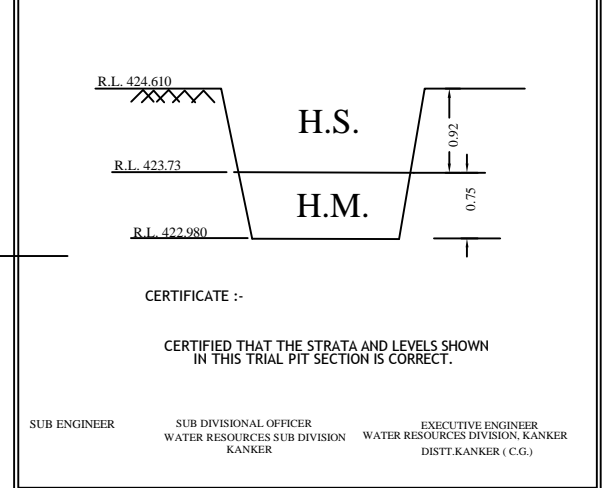
### SECTION AT Y Y

(SCALE 1:50)

### CANAL DATA

S.N.	DATA PARTICULARS	D/S	U/S
1	DISCHARGE	0.13 CUMECs	0.13 CUMECs
2	CANAL BED WIDTH	0.30 M	0.30 M
3	CANAL BED LEVEL	423.510 M	424.410 M
4	FULL SUPPLY DEPTH	0.35 M	0.35 M
5	FULL SUPPLY LEVEL	423.810 M	424.710 M
6	TOP BANK LEVEL	425.850 M	426.750 M
7	GROUND LEVEL	424.610 M	423.510 M
8	SIDE SLOPE CUTTING	2:1	2:1
9	BED GRADE	1 IN 1000	1 IN 1000
10	TOP WIDTH OF BANK	L&R=1.25/1.25M	L&R=1.25/1.25M
11	FREE BOARD	0.45	0.45
12	VELOCITY	0.380 M/Sec	0.380 M/Sec
13	DROP	0.90 M	
14	COEFFICIENT OF RUGOSITY 'N'	0.018	
15	TYPE OF SOIL	HARD SOIL	
16	TYPE OF CANAL	LINED	

### DETAILS OF TRIAL PIT SECTION



### GOVERNMENT OF CHHATTISGARH WATER RESOURCES DIVISION, KANKER

RENOVATION OF SARWANDI TANK SCHEME  
DESIGN OF 0.90 M VERTICAL FALL AT R.D. 360.00 M OF MAIN CANAL

DRAWN BY:	CHECKED BY :-
SUB ENGINEER	ASSISTANT ENGINEER (D.) I.P. CIRCLE, JAGDALPUR DISTT. JAGDALPUR ( C.G.)
SUBMITTED BY:	CHECKED BY :
SUB DIVISIONAL OFFICER WATER RESOURCES SUB DIVISION KANKER	EXECUTIVE ENGINEER (D.) I.P. CIRCLE, JAGDALPUR DISTT. JAGDALPUR ( C.G.)
CHECKED BY :-	APPROVED BY :-
ASSISTANT ENGINEER(D) WATER RESOURCES DIVISION KANKER ( C.G.)	SUPERINTENDING ENGINEER I.P. CIRCLE, JAGDALPUR DISTT. JAGDALPUR ( C.G.)
RECOMMENDED BY:-	
EXECUTIVE ENGINEER WATER RESOURCES DIVISION, KANKER DISTT. KANKER ( C.G.)	
DRAWING NO.	

